

NOTES

SCALE

REVISIONS

LEGEND

SYMBOL	DESCRIPTION
[Symbol]	RUSH BELL
[Symbol]	REMANUS SWITCH
[Symbol]	FIRE ALARM CALL POINT
[Symbol]	FIRE EXTINGUISHER W/DIR
[Symbol]	FIRE EXTINGUISHER TOMB
[Symbol]	FIRE EXTINGUISHER DRY POWDER
[Symbol]	FIRE EXTINGUISHER CARBON DIOXIDE
[Symbol]	FIRE BLANKET
[Symbol]	AFW MULTIPURPOSE EXTINGUISHER
[Symbol]	FIRE FIGHTING HOSE REEL
[Symbol]	FIRE EXIT DOORS
[Symbol]	ATMATIC SLIDING DOORS
[Symbol]	DOORS WITH ELECTRIC MAGNETIC LOCKS
[Symbol]	EXIT SIGN (EMERGENCY MAN)
[Symbol]	SMOKE DETECTOR CEILING MOUNTED
[Symbol]	HIDDEN FIRE DETECTOR
[Symbol]	FIRE ALARM BELL
[Symbol]	FIRE ALARM PANEL
[Symbol]	AUTOMATIC SPRINKLER POINTS
[Symbol]	EMERGENCY LIGHTING POINT
[Symbol]	EMERGENCY LIGHTING ILLUMINATED EXIT DOOR

0632
WITNEY

PROPOSED
GROUND FLOOR
STORE PLAN

PROJECT NO.	0632G01-3
DATE	21.02.23
SCALE	1:100
PROJECT NAME	WITNEY
CLIENT	WITNEY
DESIGNER	DAVID SARGENT
DATE	21.02.23
SCALE	1:100
PROJECT NAME	WITNEY
CLIENT	WITNEY

Sainsbury's
Sainsbury's is a registered trademark of Sainsbury's Supermarkets Ltd. © 2023

CONTINUED ON 0632G01-2

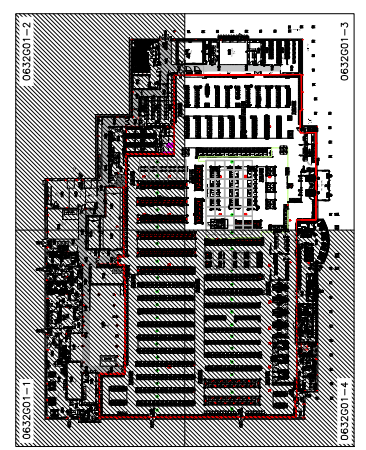
THE ENTIRE PREMISES MAY BE USED FOR THE SALE OF ALCOHOL.



CONTINUED ON 0632G01-2

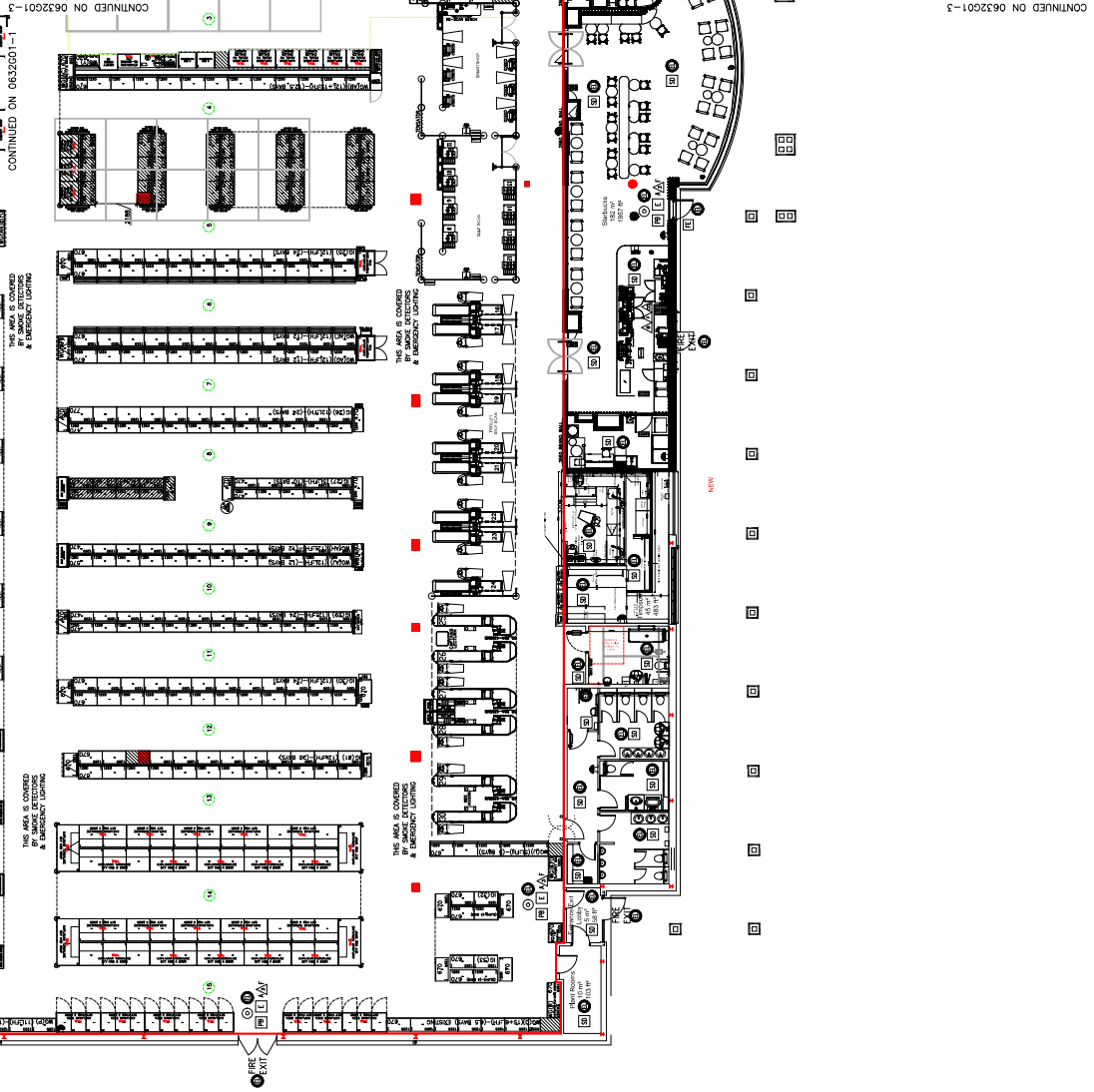
CONTINUED ON 0632G01-4

CONTINUED ON 0632G01-4



CONTINUED ON 0632G01-1

THE ENTIRE PREMISES MAY BE USED FOR THE SALE OF ALCOHOL.



CONTINUED ON 0632G01-1

CONTINUED ON 0632G01-3

NOTES
DRAWN SCALE

REVISIONS

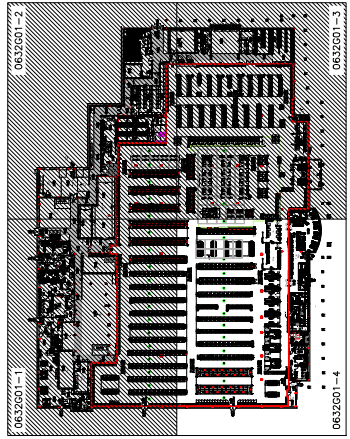
LEGEND	
SYMBOL	DESCRIPTION
[Symbol]	PUSH BAR
[Symbol]	REMANENT SWITCH
[Symbol]	FIRE ALARM CALL POINT
[Symbol]	FIRE EXTINGUISHER WATER
[Symbol]	FIRE EXTINGUISHER FOAM
[Symbol]	FIRE EXTINGUISHER DRY POWDER
[Symbol]	FIRE EXTINGUISHER CARBON DIOXIDE
[Symbol]	FIRE BLANKET
[Symbol]	AFV MULTIPURPOSE EXTINGUISHER
[Symbol]	FIRE FIGHTING HOSE REEL
[Symbol]	FIRE EXIT DOORS
[Symbol]	ATMATIC SLAMING DOORS
[Symbol]	DOORS WITH ELECTRIC MAGNETIC LOCKS
[Symbol]	EXIT SIGN (BURNING MAN)
[Symbol]	SMOKE DETECTOR CEILING MOUNTED
[Symbol]	HIDDEN FIRE DETECTOR
[Symbol]	FIRE ALARM BELL
[Symbol]	FIRE ALARM PANEL
[Symbol]	AUTOMATIC SPRINKLER POINTS
[Symbol]	EMERGENCY LIGHTING POINT
[Symbol]	EMERGENCY LIGHTING ILLUMINATED EXIT DOOR

0632
WITNEY

PROPOSED
GROUND FLOOR
STORE PLAN

DESIGNED BY	DAIANNE SURGIVY	SCALE	1:100
DATE	24.01.2023	PROJECT NO.	0632G01-4
REVISED BY		REVISION	

Sainsbury's
 Sainsbury's is a registered trademark of Sainsbury's Supermarkets Limited. All rights reserved. © Sainsbury's Supermarkets Limited 2023. All rights reserved. Sainsbury's Supermarkets Limited, 100 High Street, London EC2A 4PU, UK. Tel: 020 7624 1000. Fax: 020 7624 1001.



NOTES

REVISED

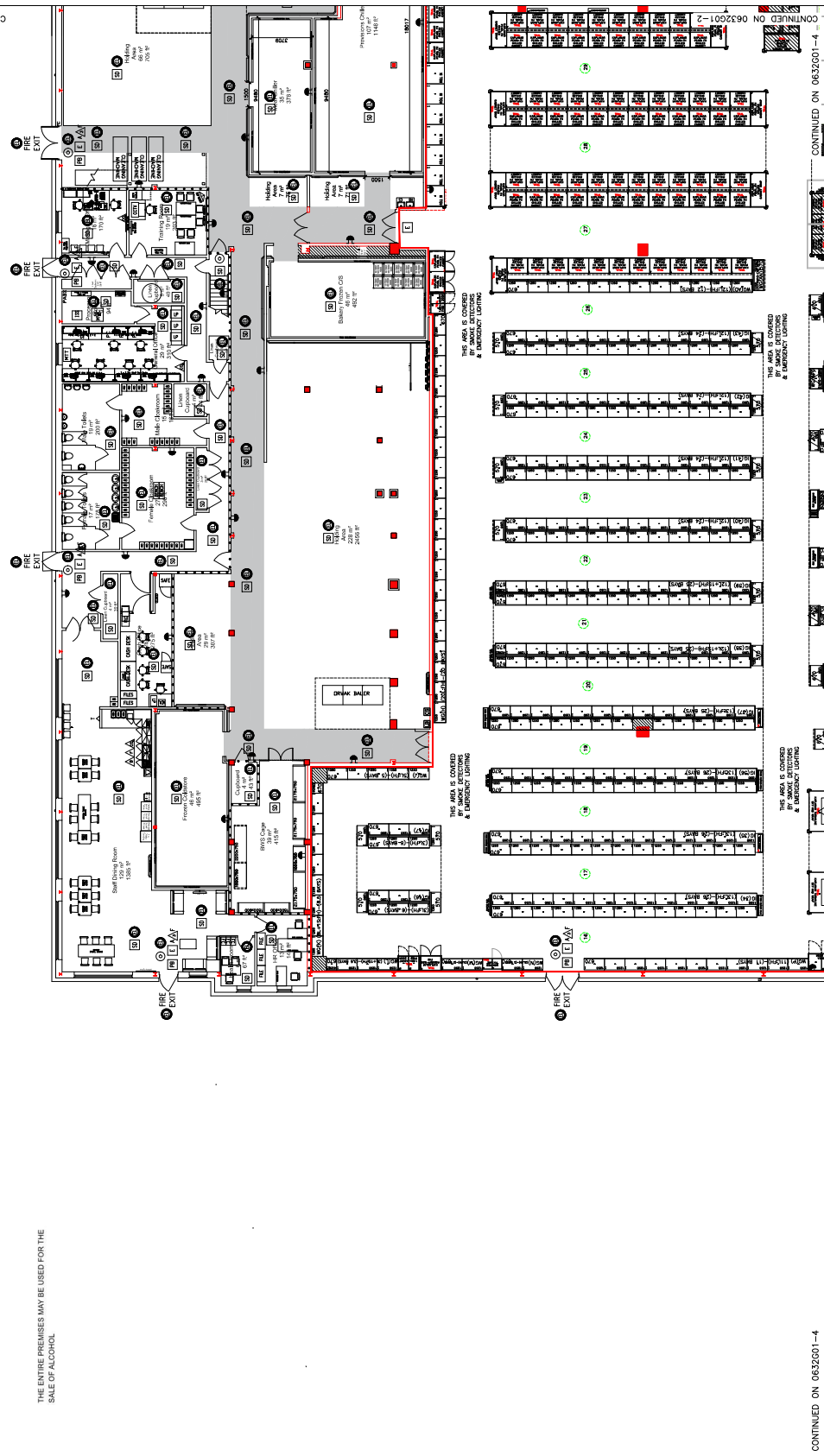
REVISIONS

NO.	DESCRIPTION
1	RUSH BAK
2	REMARKS SWITCH
3	FIRE ALARM CALL POINT
4	FIRE EXTINGUISHER WATER
5	FIRE EXTINGUISHER FOAM
6	FIRE EXTINGUISHER DRY POWDER
7	FIRE EXTINGUISHER CARBON DIOXIDE
8	FIRE BLANKET
9	AFV MULTIPURPOSE EXTINGUISHER
10	FIRE FIGHTING HOSE REEL
11	FIRE FIGHT DOORS
12	ATMATIC SLAMMING DOORS
13	DOORS WITH ELECTRIC MAGNETIC LOCKS
14	EXIT SIGN (BURNING MAN)
15	SMOKE DETECTOR CEILING MOUNTED
16	HIDDEN FIRE DETECTOR
17	FIRE ALARM BELL
18	ATMATIC SPRINKLER POINT
19	EMERGENCY LIGHTING POINT
20	EMERGENCY LIGHTING ILLUMINATED EXIT DOOR

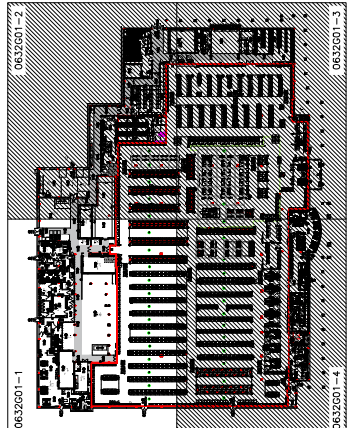
0632
WITNEY

PROPOSED
GROUND FLOOR
STORE PLAN

DESIGNED BY	DAIANNE SURGIVY
SCALE	1:100
DATE	2023
PROJECT NO.	0632G01-1



THE ENTIRE PREMISES MAY BE USED FOR THE SALE OF ALCOHOL



CONTINUED ON 000601-2

CONTINUED ON 0632G01-4

CONTINUED ON 0632G01-4

NOTES

REVISIONS

LEGEND	DESCRIPTION
[Symbol]	PUSH BAR
[Symbol]	REMANUS SWITCH
[Symbol]	FIRE ALARM CALL POINT
[Symbol]	FIRE EXTINGUISHER W/DR
[Symbol]	FIRE EXTINGUISHER IOM
[Symbol]	FIRE EXTINGUISHER DRY POWDER
[Symbol]	FIRE EXTINGUISHER CARBON DIOXIDE
[Symbol]	FIRE BLANKET
[Symbol]	AFW MULTIPURPOSE EXTINGUISHER
[Symbol]	FIRE FIGHTING HOSE REEL
[Symbol]	FIRE FIGHT ROOMS
[Symbol]	ATMATIC SLIDING DOORS
[Symbol]	DOORS WITH ELECTRIC MAGNETIC LOCKS
[Symbol]	DOOR SILENCING (MAN)
[Symbol]	SMOKE DETECTOR CEILING MOUNTED
[Symbol]	HIDDEN FIRE DETECTOR
[Symbol]	FIRE ALARM BELL
[Symbol]	FIRE ALARM PANEL
[Symbol]	EMERGENCY LIGHTING POINT
[Symbol]	EMERGENCY LIGHTING ILLUMINATED EXIT DOOR

0632
WITNEY

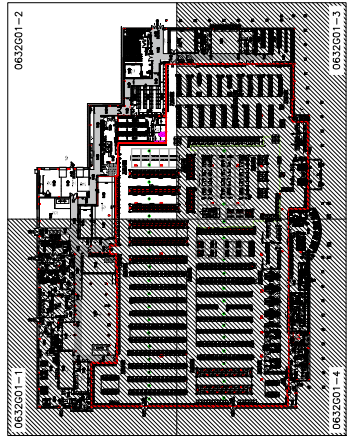
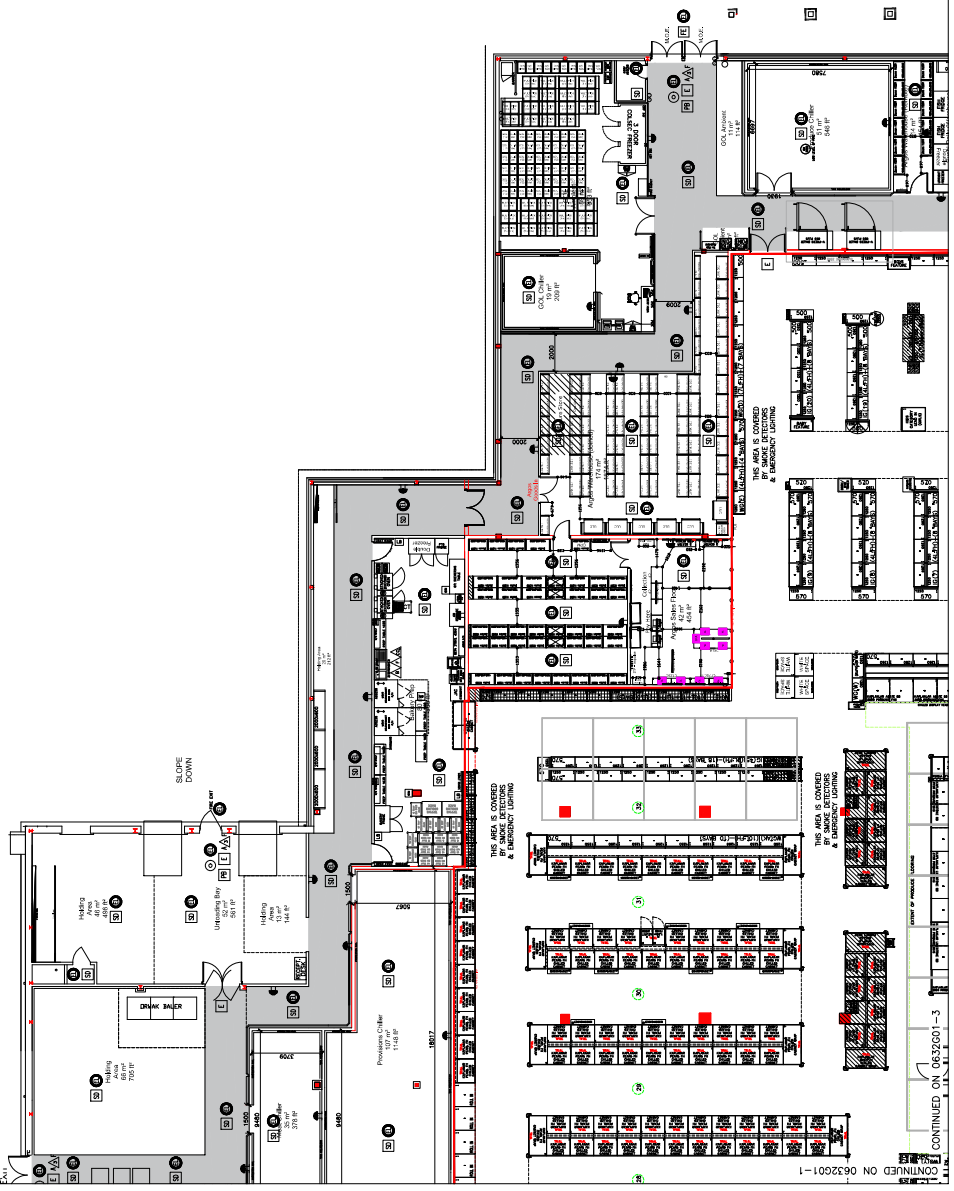
PROPOSED
GROUND FLOOR
STORE PLAN

DESIGNED BY	DAIANNE SURGIVY
SCALE	1:100
DATE	2023
PROJECT NO.	0632G01-2

Sainsbury's
Sainsbury's Retail Limited, 100 Brook Hill Drive, Brook Hill, Witney, Oxfordshire, OX29 4JF, UK
Tel: 01235 835000 Fax: 01235 835001

THE ENTIRE PREMISES MAY BE USED FOR THE SALE OF ALCOHOL.

CONTINUED ON 0632G01-3



CONTINUED ON 0632G01-1

CONTINUED ON 0632G01-1

CONTINUED ON 0632G01-3

0632G01-1

0632G01-2

0632G01-4

0632G01-3